

Pure Catskills Marketplace

Good Food. Quality Wood. Clean Water.



- About
- Catalog
- Vendor List
- Vendor Area
- View Basket



CATEGORIES

FARM

- CSA Subscriptions
- Honey/Bee Products
- Personal Care
- Preserves
- Wool & Fibers
- Made to Order
- Other
- Wholesale

FOREST

- Flooring/Lumber
- Furniture
- Household Items
- Made to Order
- Maple Products
- Other
- Wholesale

Vendor Profile - Lazy Crazy Acres



- Products
- Profile
- Contact Vendor
- Reviews

Our family has been farming this particular piece of land since the 1920's and have been farming within a 15 minute drive for close to 200 years. Currently, Lazy Crazy Acres is home to lovely grass eatin'-mountainside wanderin' heifers and a brand spankin' new creamery situated right inside our historic barn!

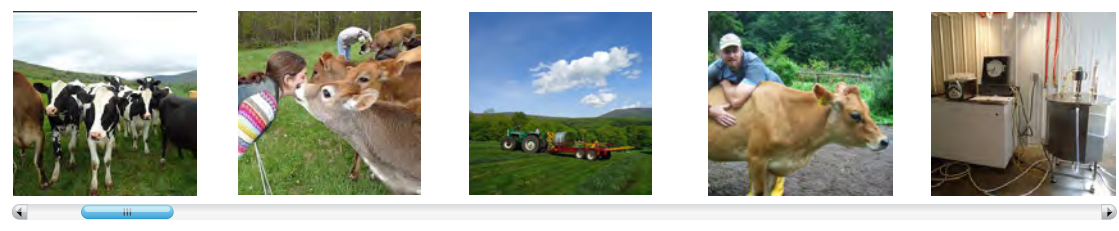
We farm hand-in-hand with our friends, the DiBenedetto family, who own Crystal Valley Farm which is located about 10 minutes down the road. We raise the heifers and operate the small batch creamery. They care for and milk the cows on their grazing dairy farm.

There are two main things to know about how we farm: One is that we believe in grazing so our herds are out on grass for as long as possible. Two is that we work in cooperation with Crystal Valley Farm in Halcott Center. We raise the heifers (young ladies) that then grow up to join the milking herd at Crystal Valley.

The heifers at Lazy Crazy Acres spend their days on intensively managed grazing pastures. What does this mean? It means we section off portions of fields and allow the ladies in to graze when the grass is just right. They rotate from pasture to pasture so that they have fresh grass to munch on all season. Managed pasture means we make sure there are a variety of healthy grasses growing. It's not unlike a salad bar for cows -- but this is with grasses such as Timothy, Ryegrass, Orchard grass and Clover. We also make hay on these fields so that we have feed in the non-grass-growing-months.

The heifers have cover in the winter in our "bedded pack" barn. It is a 5,000 square foot open air structure. The girls hang out, eat, do "their business" and sleep in the bedded pack barn throughout the cold season. We throw down fresh straw throughout the week which causes the "floor" to rise throughout the winter. Once the grass is growing and they can get back out to pasture we begin to turn the "bedded pack" into compost which then ends up as fertilizer out on the fields. It's the circle of life!

Click on a thumbnail for a virtual tour of our business ...



[View all products made by Lazy Crazy Acres >>>>](#)



Sign Up For Our Newsletter >>

Subscribe

Customer Login/Register
My Account
Customer FAQs

Vendor Login
Vendor FAQs
Becoming a Vendor

Contact Us
Store Policies
Customer Support
Security Information
Copyright